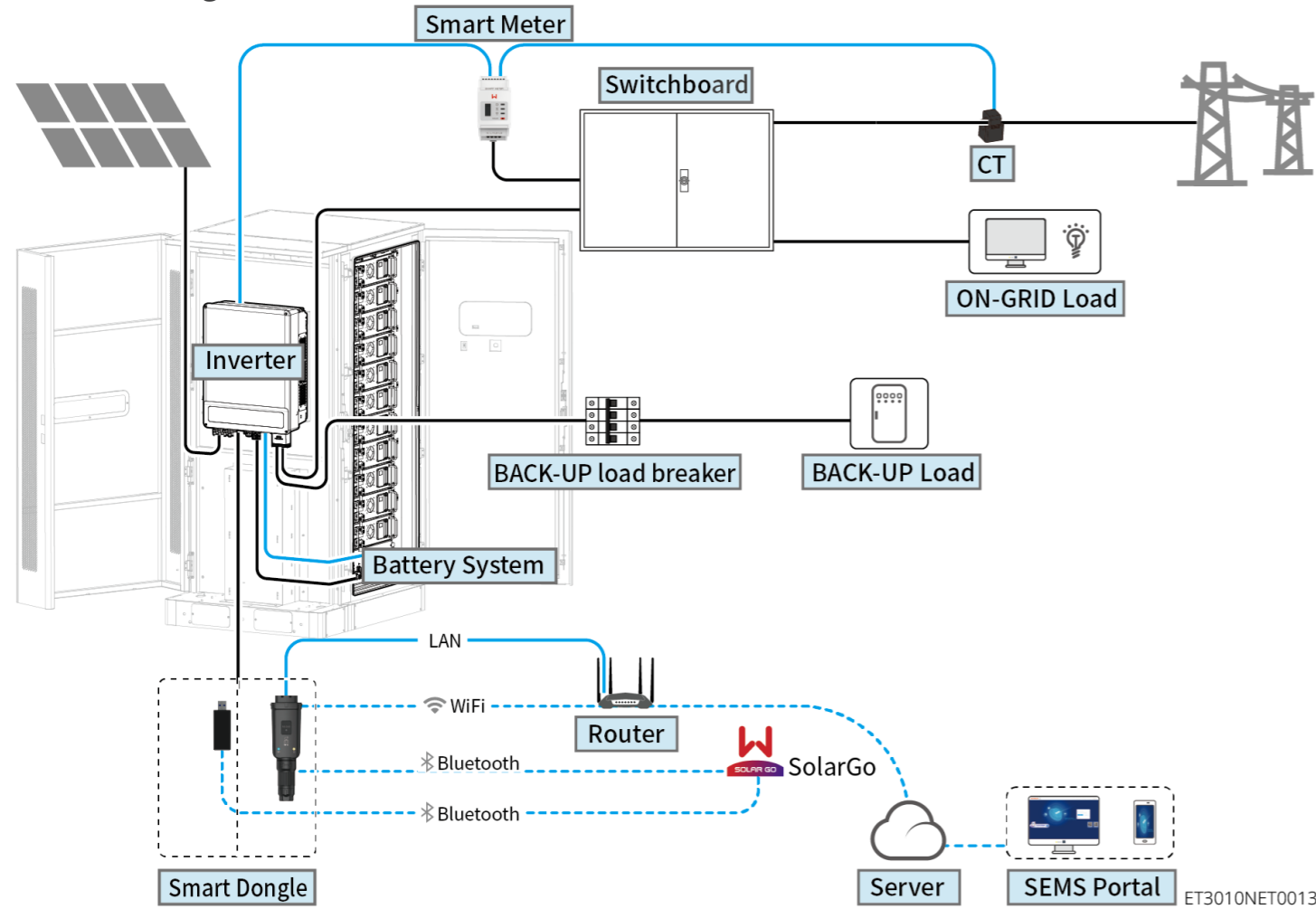


### ⚠ WARNING

The information in this user manual is subject to change due to product updates or other reasons. This guide cannot replace the product labels or the safety precautions in the user manual unless otherwise specified. All descriptions in the manual are for guidance only.

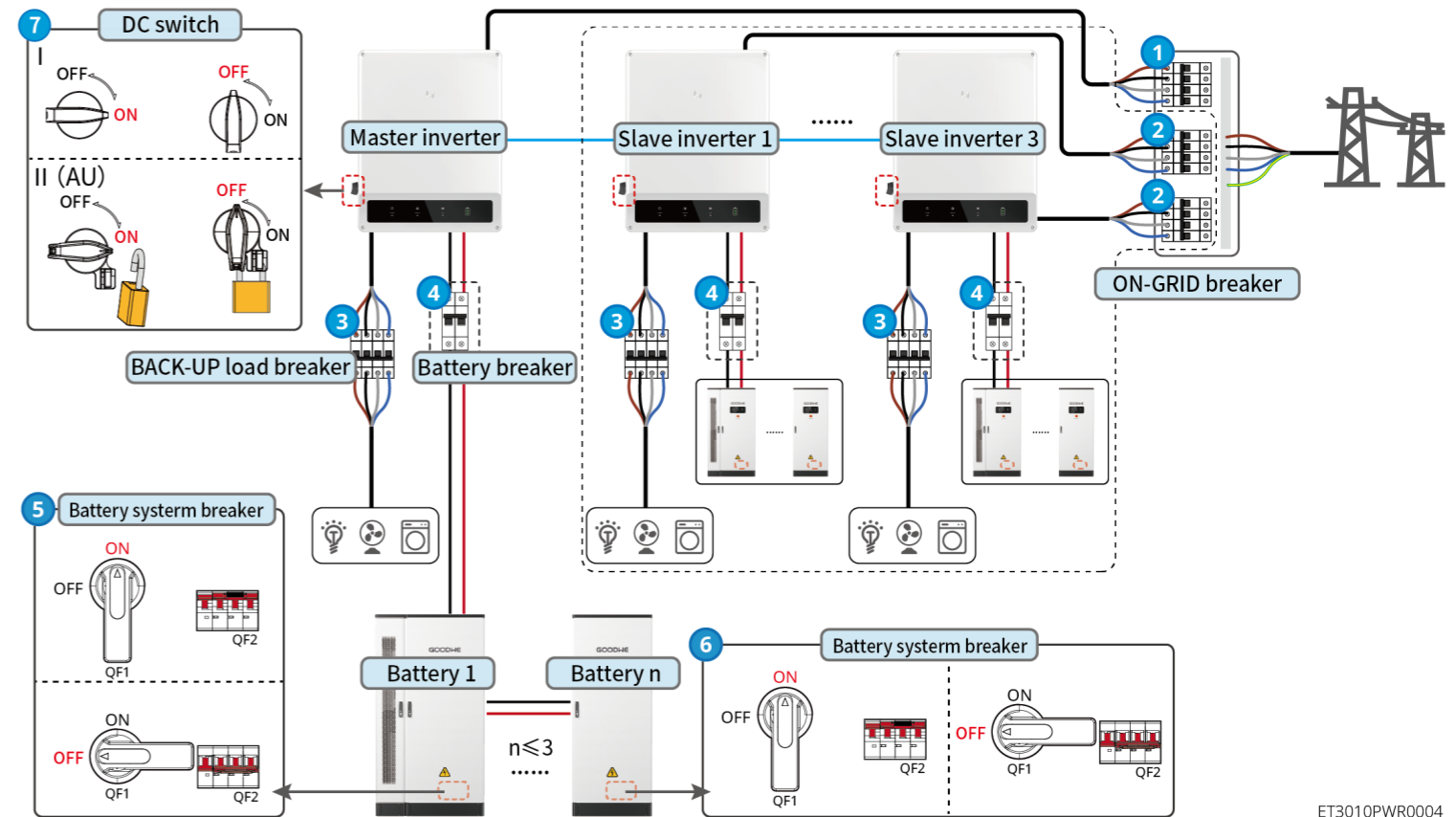
## 01 Networking



Product Type	Model	Description
Inverter	GW15K-ET GW20K-ET GW25K-ET GW29.9K-ET GW30K-ET	A maximum of 4 inverters can be connected in a parallel system. Inverter firmware requirements for parallel connections: <ul style="list-style-type: none"> <li>Consistent firmware version</li> <li>ARM version: 08(401) or above</li> <li>DSP version: 07(7068) or above</li> </ul>
Battery system	GW60KWH-D-10 GW60KWH-D-10(Extension)	A maximum of 3 battery systems can be clustered in a system.

Product Type	Model	Description
Smart meter	<ul style="list-style-type: none"> <li>GM3000</li> <li>GM330</li> </ul>	<ul style="list-style-type: none"> <li>GM3000: GM3000 and the CT, which cannot be replaced, are included in the inverter package. CT ratio: 120A/40mA.</li> <li>GM330: Order the CT for GM330 from GoodWe or other suppliers. CT ratio: nA/5A. <ul style="list-style-type: none"> <li>nA: CT primary input current, n ranges from 200 to 5000.</li> <li>5A: CT Secondary input current.</li> </ul> </li> </ul>
Smart dongle	<ul style="list-style-type: none"> <li>WiFi/LAN Kit-20</li> <li>Wi-Fi Kit</li> <li>Ezlink3000</li> </ul>	<ul style="list-style-type: none"> <li>Use WiFi/LAN Kit-20 or Wi-Fi kit for a single inverter. Upgrade the firmware of the inverter before replacing the Wi-Fi kit with a WiFi/LAN Kit-20 dongle.</li> <li>In parallel scenarios, the EzLink3000 must be connected to the master inverter. Do not connect any communication module to the slave inverters. The firmware version of EzLink should be 04 or above.</li> </ul>

## 02 Power On/Off



### Power ON/OFF:



④ : Optional in compliance with local laws and regulations.

### 03 Installations

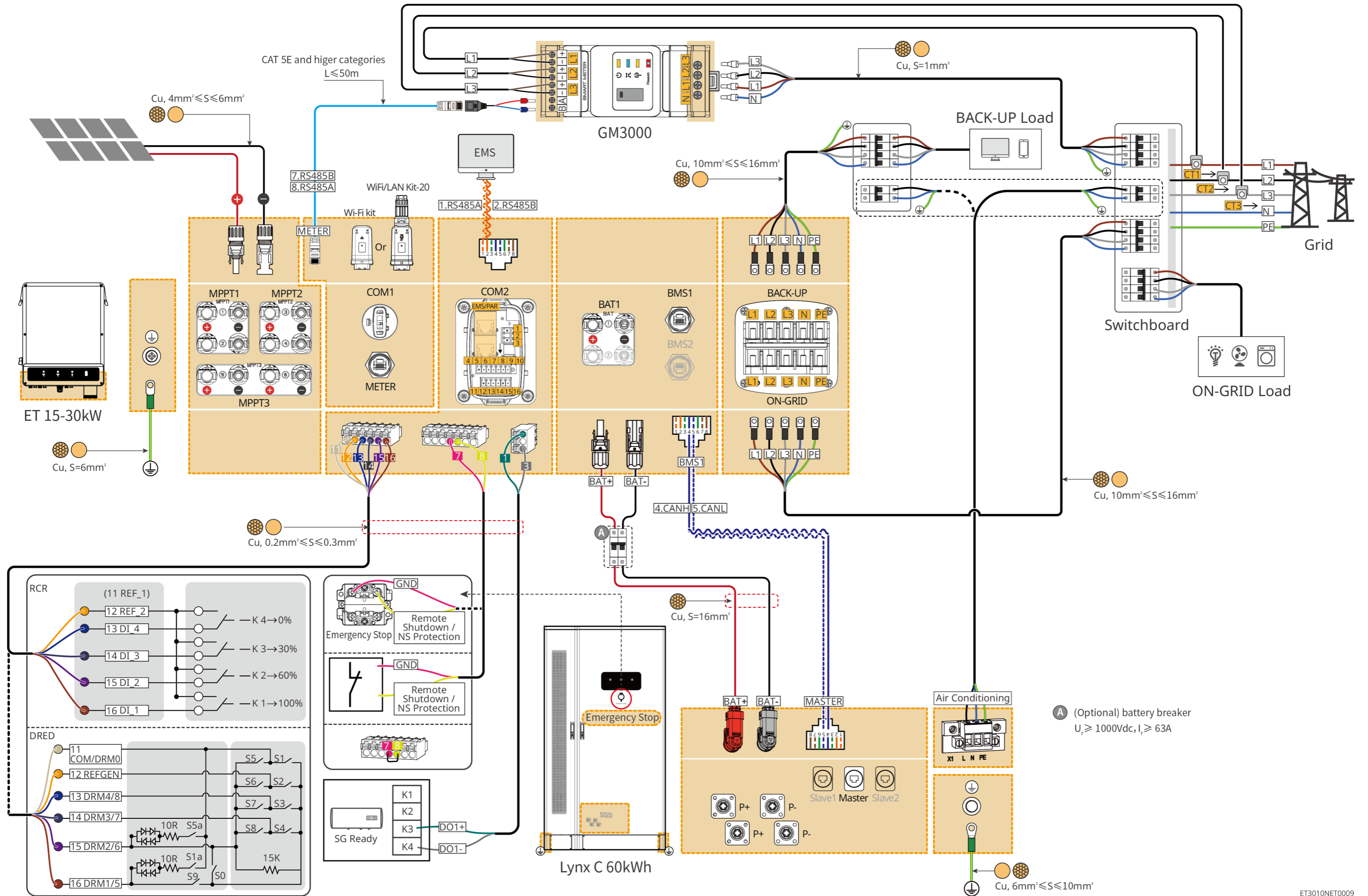
Steps	1 Installation	2 PE	3 Battery	4 COM	
Battery					
Tools	<p>1</p> <p>D: 80mm φ: 14mm</p> <p>2</p> <p>M12 50N·m</p>	<p>M5 4.5N·m</p>	<p>1</p> <p>M6 6N·m</p> <p>2</p> <p>M8 10N·m</p>	<p>Recommend: YQK-70</p> <p>2</p> <p>M5 4.5-6N·m</p>	

Steps	1 Installation	2 PE	3 PV	4 Battery	5 AC	6 COM	7 Communication module		
Inverter							Wi-Fi Kit	WiFi/LAN Kit-20	Ezlink3000
Tools	<p>1</p> <p>M5 4.5N·m</p> <p>2</p> <p>M5 1.2~2N·m</p>	<p>M5 1.2~2N·m</p>	<p>Recommend: PV-CZM-61100</p>	<p>Recommend: YQK-70</p>	<p>1</p> <p>M5 2~3N·m</p> <p>2</p> <p>M6 3~4N·m</p>				

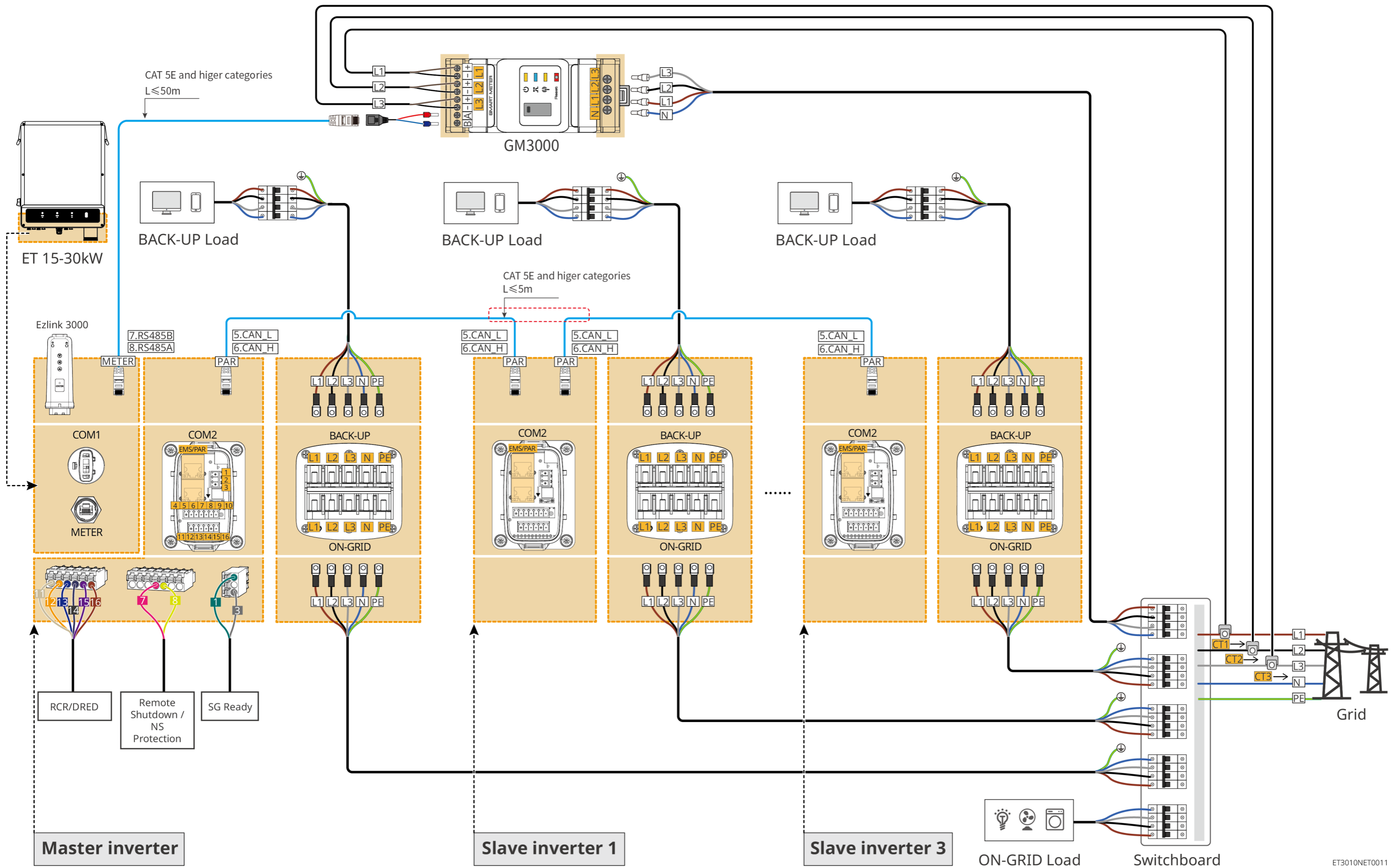
Steps	1 Installation		2 Cable Connections		3 Power	4 Commissioning	
Smart meter	GM3000	GM330	GM3000	GM330			

# 04 Wiring Diagram

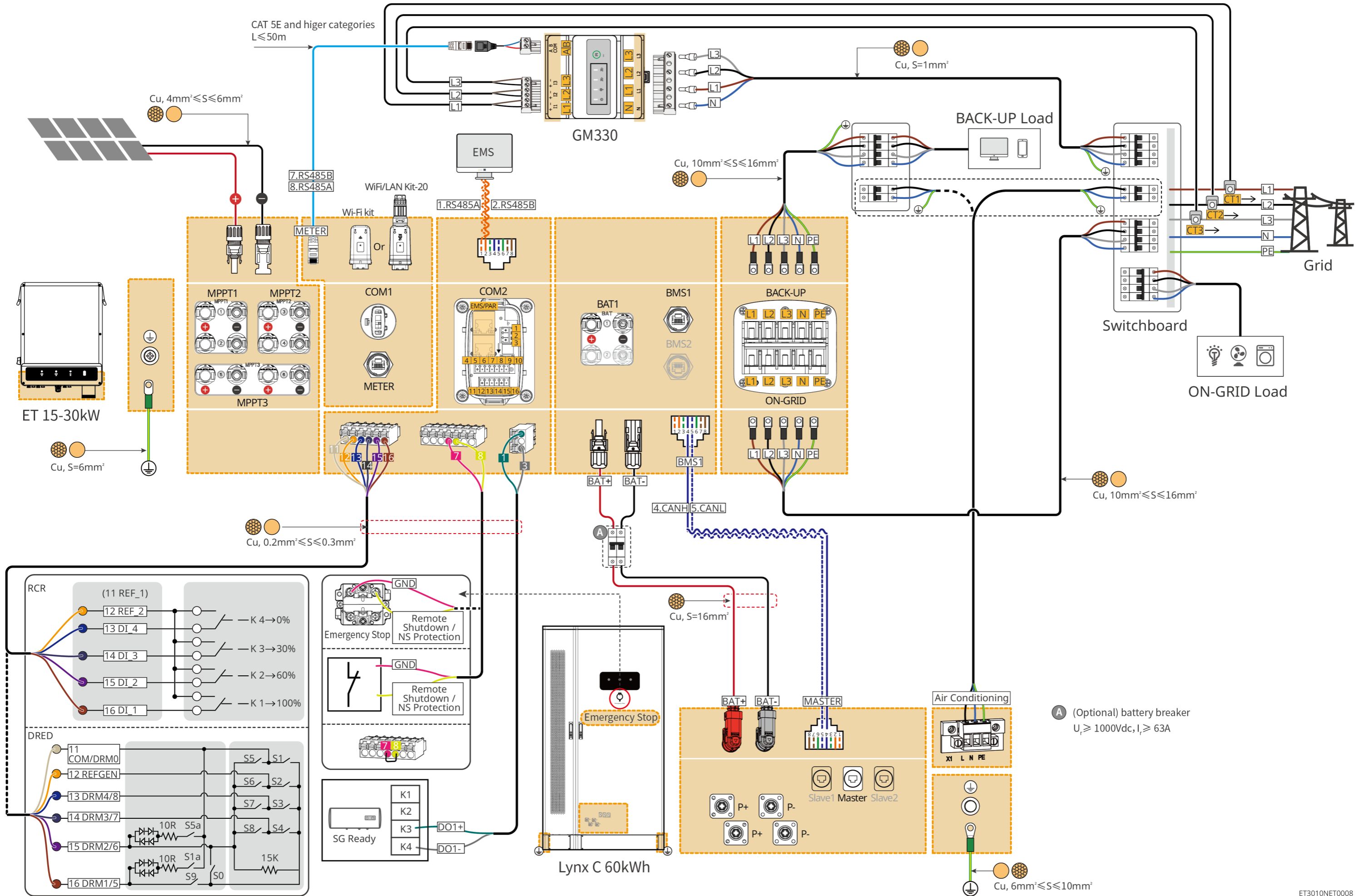
ET 15-30kW(single) + Lynx C 60kWh + GM3000 + WiFi/LAN

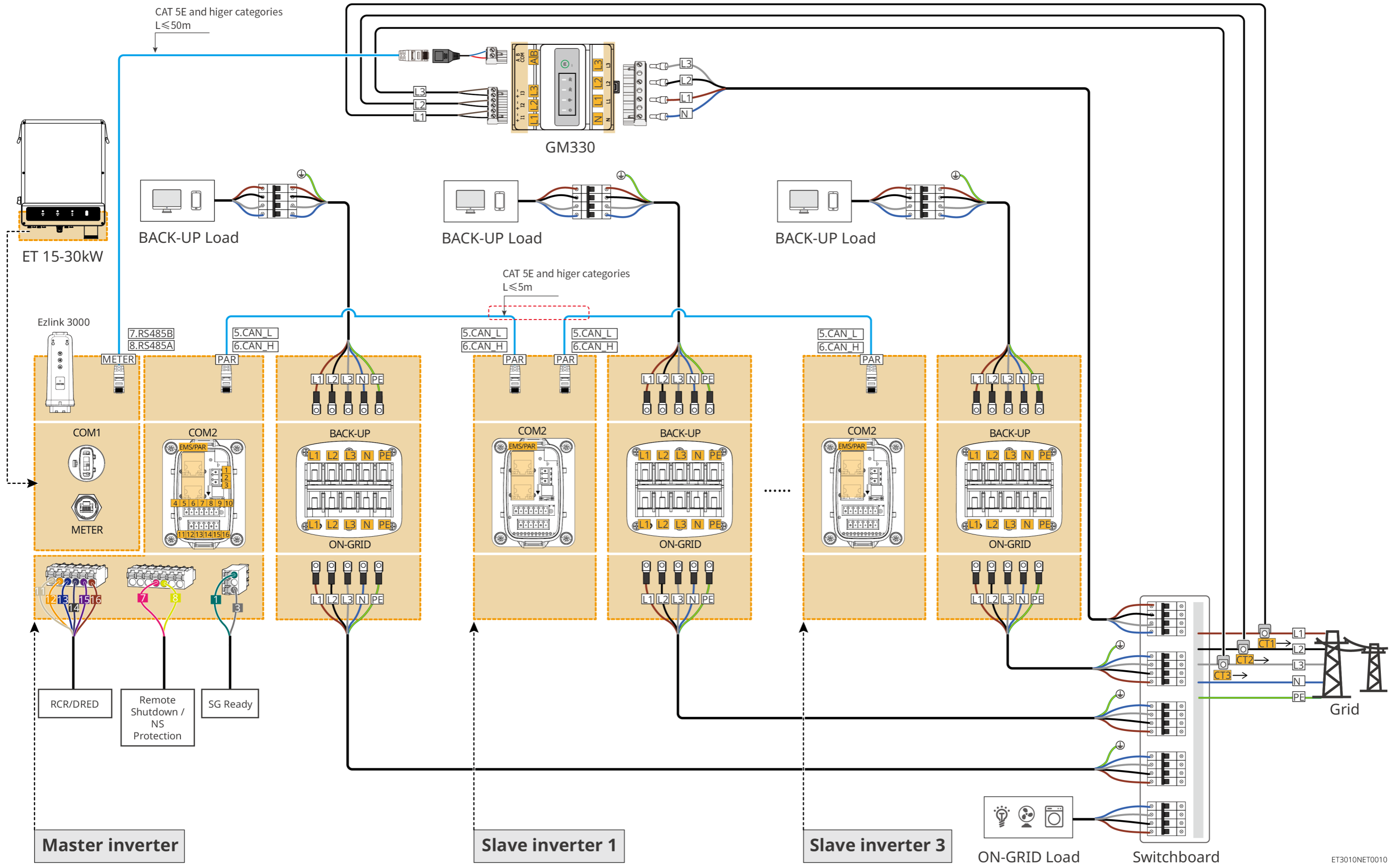




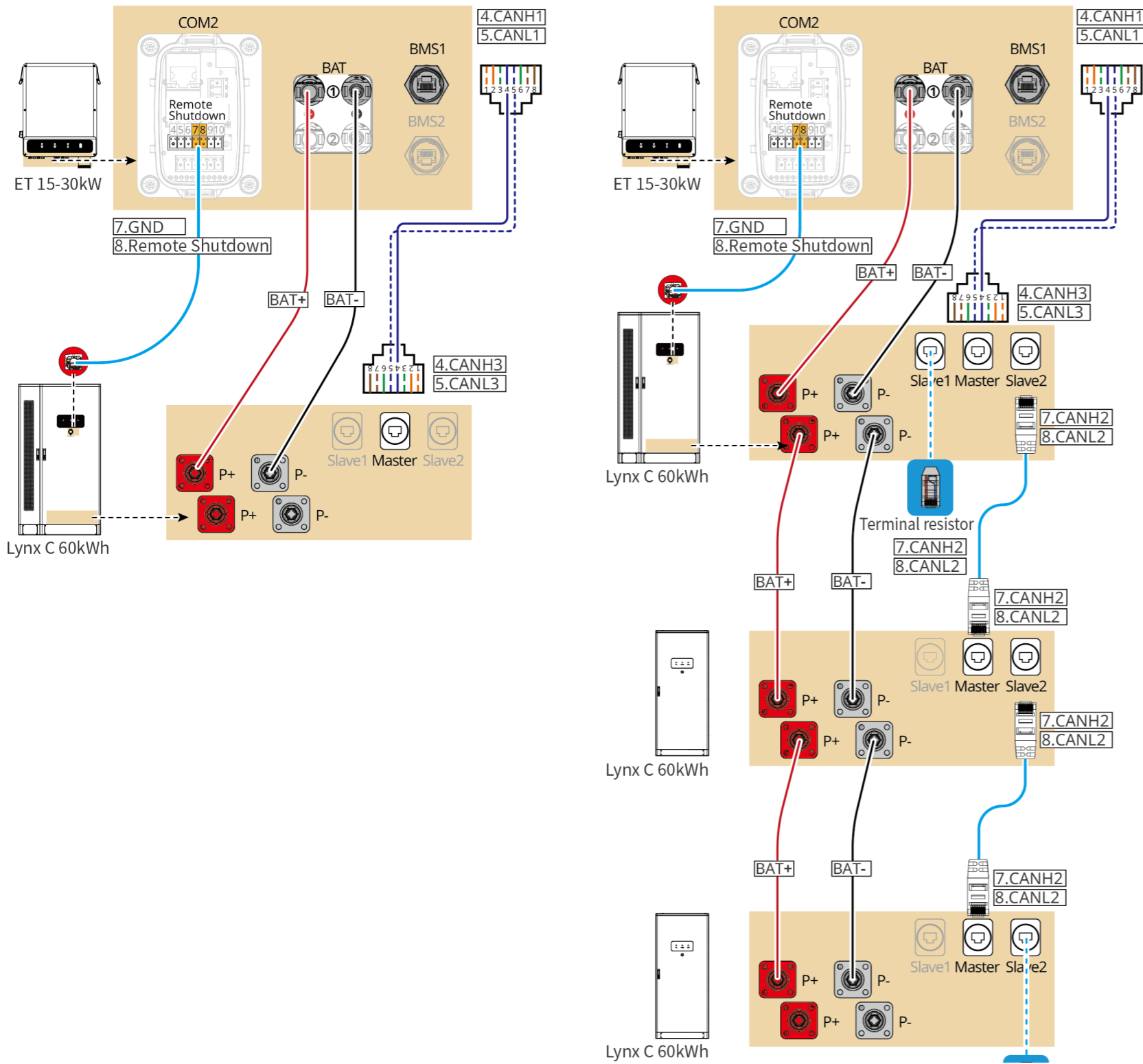








## Battery system wiring diagram



## 05 Equipment Commissioning

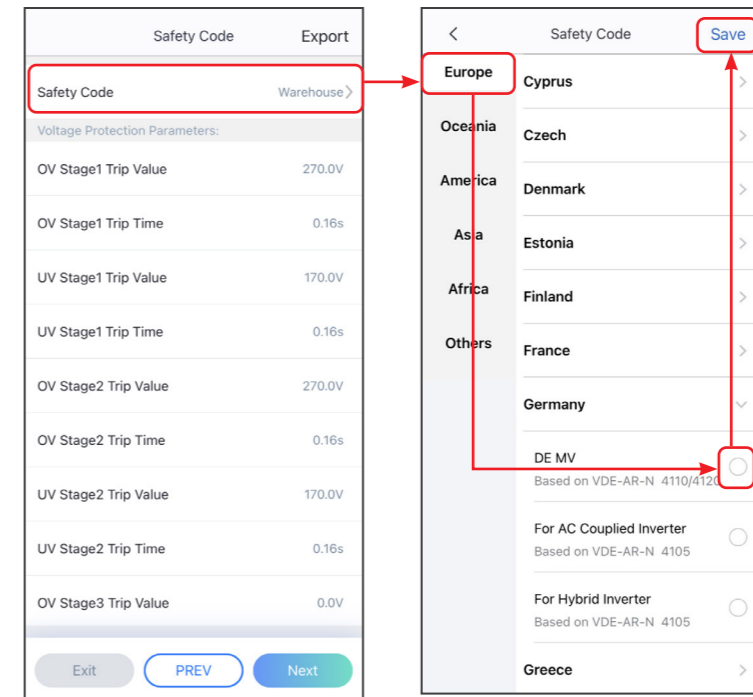


In parallel scenarios, the software version of SolarGo app should be 5.3.0 or above. Follow the prompts to connect the device.

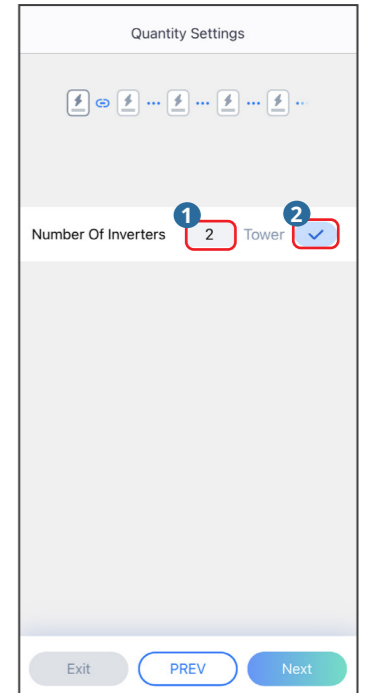
### Quick Settings

Tap **Home > Settings > Quick Settings** to complete quick settings step by step. Installer password: goodwe2010

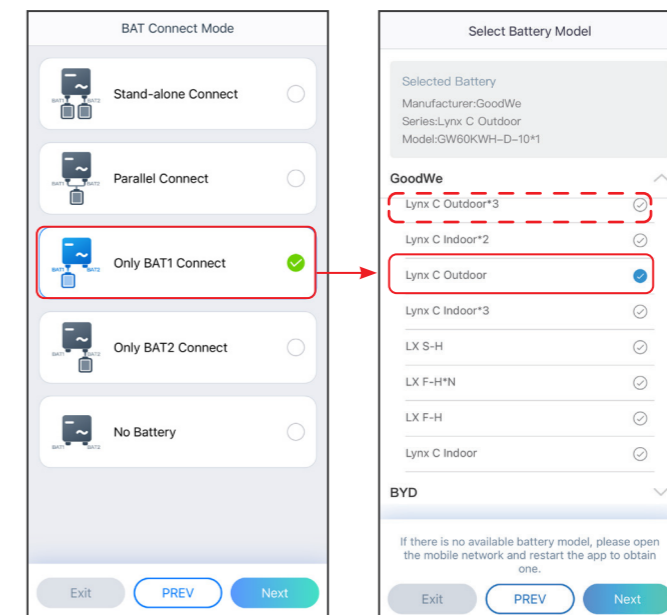
### Setting the Safety Code



### Setting Inverter Quantity (Only For Parallel Connections)



### Setting the BAT Connect Mode





## Setting the Working Mode

**Working mode**

**Self-use Mode**

Depth Of Discharge (On-Grid) 60

Depth Of Discharge (Off-grid) 60

**Advanced Settings**

Back-up Mode

Economic Mode

Smart Charging

**Depth Of Discharge (On-Grid):**  
The maximum depth of discharge of the battery when the system is working on-grid.

**Depth Of Discharge (Off-Grid):**  
The maximum depth of discharge of the battery when the system is working off-grid.

**BACK-UP Mode**

Charging From Grid

Rated Power

**Economic Mode**

Battery Working Mode Group1

Charge Power: 50.0 % SOC: 98%

00:00-07:00

**Smart Charging Mode**

Smart Charging Month

Peak Limiting Power

Switch To Charge

Charging Time

## Setting Batteries Of Each Inverters (Only For Parallel Connections)

Follow the prompts to set the battery model and connection mode of each inverter.

**Parallel System:**

Total Number 2

Total Online 2

Total abnormal 0

**Settings**

Communication Setting

Quick Settings

## Setting Advanced Parameters

Tap **Home > Settings > Advanced Settings** to set the following functions.

### Setting DRED/Remote Shutdown/RCR or Three-phase Unbalanced Output Function (Optional)

**Advanced Settings**

DRED/Remote Shutdown/RCR

Three-phase Unbalanced Output

Backup N And PE Relay Switch

Power Limit

AFCI Test

Battery Function

Safety Parameter Settings

Enable **Three-phase Unbalanced Output** when the utility grid company adopts phase separate billing.

### Setting the Power Limit Function

**Power Limit**

Power Limit

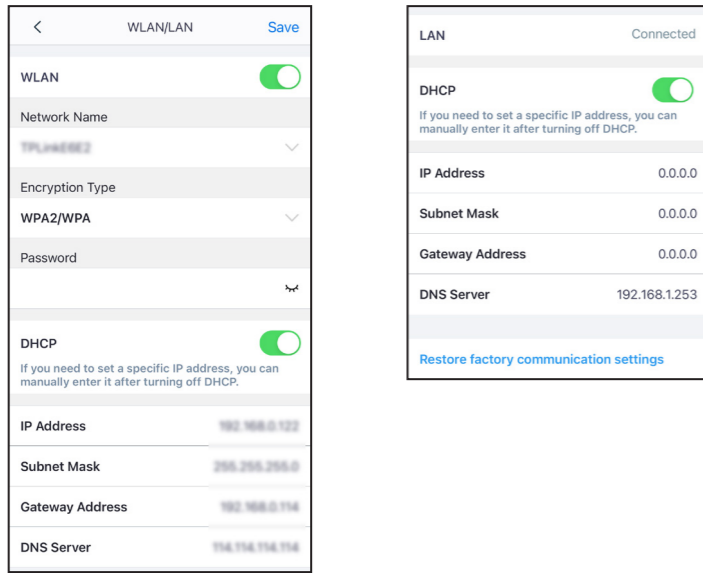
Export Power (W) 0 0

External CT Ratio 0 400

## Configuring the Network

Tap **Home > Settings > Communication Setting** to set network parameters.

### WiFi/LAN Kit-20, Wi-Fi or Ezlink3000



## Creating a Power Plant

Create power plants and add equipments via SEMS Portal app.

